

FEATHERSTONE HIGH SIXTH FORM

PROSPECTUS 2024/25



*fth*6

OUR 6TH FORM



The Sixth Form at Featherstone High School is large, well established, able to offer a wide range of subjects and courses and, perhaps most importantly, highly successful.

We understand at Featherstone that the Sixth form is a launch pad for what our students will do when they move on. To that end, our vision is based on ensuring that they achieve the best grades they are capable of; that they are fully prepared for future success in the next stage of their journey and that they are ready to take their place in society as learners and citizens in 21st century Britain.

Our results are consistently excellent and every year our students progress to take up places at the highest performing and most prestigious universities in the country. Our teaching and pastoral support is relentless in looking to maximise the number of students who can advance to the very best universities or the very best work opportunities.

We are fortunate to house our sixth form in a state-of-the-art building with its own library, café and suite of classrooms. Our staff are experienced specialists in their subject areas and the students themselves recognise what they are here to do and understand that everyone is supportive of their ambition and potential.

I invite you to visit the Sixth form at Featherstone and to see for yourself what a wonderful opportunity is on offer. We are heavily oversubscribed so be sure to apply fast and we will look forward to seeing you in the near future.

MR WALTERS, HEADTEACHER

2 CLASS OF 2023

3 EXCELLENT FACILITIES

4 FHS SCHOLARS

5 TESTIMONIALS

6 STUDENT LIFE

7 LEARNING PATHWAYS

8 PROGRESSION

9 YOUR OPTIONS

11 A LEVEL COURSES & CRITERIA

17 T LEVEL COURSES & CRITERIA

19 BTEC COURSES & CRITERIA

22 APPLICATION

CLASS OF 2023



BENJAMIN

OXFORD UNIVERSITY
PHYSICS



DEANDRA

KING'S COLLEGE LONDON
NEUROSCIENCE & PSYCHOLOGY



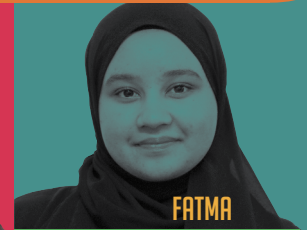
ABHIJEET

CAMBRIDGE UNIVERSITY
ECONOMICS



ZOHAA

OXFORD UNIVERSITY
HISTORY



FATMA

UCL
MEDICINE



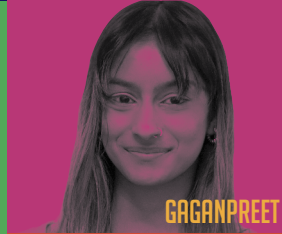
JASMEEN

KING'S COLLEGE LONDON
PHARMACOLOGY



JASMINE

SURREY UNIVERSITY
CRIMINOLOGY



GAGANPREET

KING'S COLLEGE LONDON
HISTORY

A LEVEL

81% OF STUDENTS GAINED TOP A*-C GRADES

28% A*-A

57% A*-B

BTEC LEVEL 3

73% OF STUDENTS GAINED DISTINCTION* - DISTINCTION



PAWANPREET

UCL
PHILOSOPHY, POLITCS & ECONOMICS



SHAHEEM

ROYAL HOLLOWAY
MANAGEMENT WITH ACCOUNTANCY



RABISA

KING'S COLLEGE LONDON
NURSING



YASMIN

QUEEN MARY UNIVERSITY
MEDICINE



JUNAID

QUEEN MARY UNIVERSITY
ACCOUNTING & MANAGEMENT



MUSTAFA

BRUNEL UNIVERSITY
COMPUTER SCIENCE



JONAS

KING'S COLLEGE LONDON
NURSING



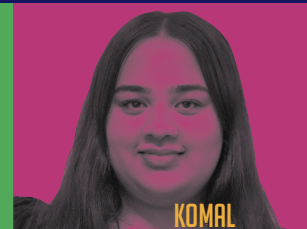
HIBO

QUEEN MARY UNIVERSITY
BUSINESS MANAGEMENT



HAFSAH

KING'S COLLEGE LONDON
NURSING



KOMAL

KINGSTON UNIVERSITY
BIOMEDICAL SCIENCE

EXCELLENT FACILITIES



Students at Featherstone Sixth Form have access to a purpose built, separate building, dedicated to their studies.

Unlike other Sixth Forms, Featherstone provides a different experience where students wear business attire and study in a more mature environment.

We have a dedicated library for sixth formers for quiet study as well as a social space and cafe.

We also have Study Pods for quiet work and each student receives a Netbook to aid study.

- **Dedicated Library**
- **Study Pods**
- **Individual student Netbooks**
- **Café and social space for students**
- **Media and Music Technology Suite**

FANTASTIC LEARNING ENVIRONMENT AT FH6



FHS SCHOLARS

FHS SCHOLARS PROGRAMME

This programme will be offered to students who have achieved very high GCSE grades (majority 7-9s). They will be competing for places to study at one of the top universities around the country; including Oxbridge (Oxford and Cambridge) and the Russell Group Universities for courses such as Medicine, Dentistry and Law. For such courses and universities, students will be required to show that they can be stretched and challenged and achieve outside of their academic field. They will need to demonstrate some of the much sought after skills such as in-depth research ability, independent and creative thinking and presentation and interview skills.

Students can apply for the FHS Scholars Programme at the beginning of Year 12.

APPLYING TO TOP UNIVERSITIES

For those considering applying to Oxbridge, we offer a comprehensive package to support students. Students are encouraged to attend Oxbridge taster days and apply for residential courses. We also liaise with Oxbridge representatives regarding interviews and personal statement writing. Students applying for Russell Group Universities and courses may need to take exams such as BMAT or STEP and students will be supported and advised of these details to ensure they are successful.

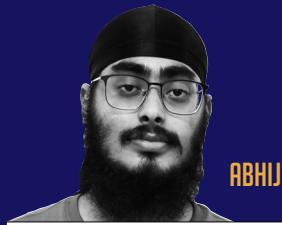
APPLYING FOR MEDICINE

Students wishing to apply for Medicine are given the opportunity to complete work experience at a hospital in the summer term of Year 12, and participate in medical workshops with working health professionals and successful medical students from the school.

FHS OXBRIDGE ALUMNI 2023



ZOHA



ABHIJEET



BENJAMIN



5 STUDENTS ACCEPTED TO STUDY MEDICINE AND DENTISTRY

TESTIMONIALS

“ Thank you to my amazing teachers and form tutor for all the support in helping me achieve these outstanding grades. ”

ANZIA

“ Thank you to all the teachers for going out of their way to help me achieve these amazing grades. ”

SANDALDEEP

“ Featherstone is a wonderful school filled with many great friends and teachers that can really help you. ”

BASIT

“ FHS went above and beyond to support me through difficult times. If it wasn't for them, I wouldn't have achieved my offer or even considered applying to Cambridge. ”

ABHIJEET

“ I have no words for how supportive all the members of staff were throughout my Medical School application. I appreciate the emotional support and general encouragement I received. I will miss FHS dearly. THANK YOU!!! I can't believe I'm going to be a doctor! ”

YASMIN

“ I appreciate all the support and encouragement I have received from the amazing teachers here. I've spent an eventful 7 years here and I can't wait for the future FHS has prepared me for. Thank you for everything! ”

FARHIYA

“ Having been surprised by fantastic results, I can't help but think of the supportive, rewarding atmosphere here at FHS that pushed me to apply to Oxford in the first place. A combination of incredible teachers and amazing peers created an environment where I worked and learned with amazing results. I couldn't have chosen a better place to spend the last 7 years of my academic journey. ”

BENJAMIN

“ FHS Scholars was the most perfect stepping stone to helping me get my offer for Medicine. I found the mock interviews really insightful and I appreciate all the constructive feedback I was given. ”

SADAF

FHS6 TEACHERS AND STAFF WANT YOU TO REALISE YOUR POTENTIAL

STUDENT LIFE

STUDENT LIFE

At FHS Sixth Form we offer our students a variety of opportunities to enhance their life experiences, build self confidence and learn respect. By encouraging students to participate we aim to support their applications for the world of work or higher education. Through enrichment, it is evident that FHS students grow into well rounded, open minded individuals who are recognised on a local, regional and national scale.

- 6th Form Committee
- Student Council
- Prefects
- Work Experience
- Subject Related Talks
- External Speakers
- International Trips
- Peer Mentoring
- Curriculum Days
- Enrichment Opportunities
- Aim Higher Days
- World Class Schools
- Head Boy & Girl
- Graduation Ball
- Young Enterprise
- Sports Clubs
- University Taster Days
- Catalyst Leaders Programme
- Take the Lead Programme

STUDENT VOICE

We have a number of projects on offer for students in the Sixth Form. Students can be elected as a form rep, and subsequently sit on the School Council. We also have a Sixth Form committee led by the Head Boy and Head Girl. Students may also sign up to be prefects, taking responsibility on lunch duties and events across the school. Opportunities for students to be leaders for the Jack Petchey Award are on offer as well as various charity projects.

COMMUNITY

Our motto "Together we Achieve" is all encompassing. At FHS Sixth Form our students relish their involvement in fund-raising and charity work. Each year, because of the determination and kind hearts of our students, we make a number of sizeable donations to local, national and international charities, helping those less fortunate.

- Amnesty International Youth Awards
- St John's Ambulance Cadets
- Christmas Hampers
- Jack Petchey Award

WORK EXPERIENCE

Students will have the opportunity to complete a one week work experience placement at the end of Year 12. Students will have the opportunity to find their own placement that complements their studies and career aspirations.



FHS HAS A STRONG COMMUNITY SPIRIT: TOGETHER WE ACHIEVE

LEARNING PATHWAYS



A LEVEL

5 x 9-4 GCSEs (APS 4.5 - 5)

GCSE grade 6 in the subject you wish to study (grade 7 required for Physics, unless studying A Level Maths)

Grade 4 in English Language and Maths required

Please look at specific subject requirements for all subjects



BTEC LEVEL 3

5 x 9-3 GCSEs (APS 3.5)

Grade 4 in English Language and Maths required

National Diploma = 2 A Levels
National Extended Certificate = 1 A Level

Science at grade 3-3 (Trilogy) required for certain subjects



A LEVEL & BTEC

5 x 9-4 GCSEs (APS 4.5 - 5)

You need a grade 6 at GCSE for the A Level you wish to follow

Grade 4 in English Language and Maths required

Students will pick one A Level alongside a BTEC Diploma



T LEVEL

5 x 9-4 GCSEs (APS 4.0)

Grade 4 in English Language, Maths and Trilogy Science (4-4)

Work Experience is compulsory for all students to pass the course. Students must complete 45 days of work experience and be prepared to travel beyond the local area.

HERE TO HELP YOU MAKE THE RIGHT SUBJECT CHOICES

PROGRESSION

PROGRESSION INTO YEAR 12

The school will look at all students on an individual basis and whether they are suitable for the courses chosen. External students will be requested to show their birth certificate, current passport, proof of address and all relevant qualifications. Students will have to complete entrance exams for Maths and Sciences and must be endorsed by the Head of Department. Students that do not meet the required standard will be re-coursed. Students will have to complete course preparatory work over the summer for all subjects. It will be up to the discretion of the Sixth Form Team as to which courses students are able to follow.

PROGRESSION INTO YEAR 13

A Level

In order to continue into Year 13, students will need to have attained a minimum of 3 Es in the end of Year 12 exams. In circumstances where students have not achieved 3 Es, they will be required to attend an interview with the Director of Sixth Form to look at options and may be re-coursed.

BTEC Level 3 Courses

In order to continue into Year 13 students will need to be working towards their minimum target grades at BTEC Level 3 in all of their subjects. This includes passing any external assessments or exams.

In addition to the above the following will also be considered:

- **Attendance 95%**
- **Effort**
- **Ability to meet deadlines**
- **Quality of class & home work**
- **Completion of work experience**
- **Passing any BTEC external examinations**



YOUR OPTIONS

A LEVEL ROUTE

Most students will follow 3 subjects, each must be from a different box from option 1- 4.

A LEVEL OPTION 1

Biology
Art
Business
Further Maths
Sociology
Geography

A LEVEL OPTION 2

Chemistry
Economics
Maths
Politics
Psychology

A LEVEL OPTION 3

Biology
History
Maths
Physics
Sociology
French
Spanish

A LEVEL OPTION 4

Chemistry
Economics
Maths
English Literature
Psychology
Computer Science

Those students who have gained 9s & 8s in the main at GCSE, may have the opportunity to study 4 A Level subjects. Further Maths can only be taken as a fourth subject.

BTEC LEVEL 3 ROUTE

All students will follow 2 different subjects, pick from either option one or option two.

OPTION 1

BTEC LEVEL 3 NATIONAL DIPLOMA

Applied Science
Business
Sport

LEVEL 3 EXT. CERTIFICATE

Business

OPTION 2

BTEC LEVEL 3 NATIONAL DIPLOMA

Applied Science
Business

LEVEL 3 EXT. CERTIFICATE

Applied Science
Business
Sport

Students will follow 2 BTEC subjects at Level 3 (one Diploma and one Certificate) which will be the equivalent of 3 A Levels.

All courses are subject to the viability of minimum and maximum class numbers and students meeting the course criteria.



T LEVEL ROUTE

T LEVEL OPTION 1

Healthcare Science

A LEVEL & BTEC ROUTE

Students will have the option of selecting 1 A Level course with a Level 3 Diploma (subject criteria applies). Students should pick from either Option 1 or Option 2 only.

OPTION 1

BTEC LEVEL 3 NATIONAL DIPLOMA

Applied Science
Business

A LEVEL OPTION

Biology	Chemistry
Art	Economics
Business	Maths
Sociology	Politics
Geography	Psychology

OPTION 2

BTEC LEVEL 3 NATIONAL DIPLOMA

Applied Science
Business
Sport

A LEVEL OPTION

Biology	Chemistry
History	Economics
Physics	Maths
Sociology	English Literature
French	Psychology
Spanish	Computer Science

WE OFFER A LEVEL, T LEVEL, LEVEL 3 BTEC & COMBINED ROUTES

A LEVELS

WHAT ARE A LEVELS?

These are academic qualifications which require the ability to do extended reading and writing. A Levels provide a route to university.

To study A Levels you will need five GCSEs at grade 4 or above (including English Language and Maths at grade 4) and at least a grade 6 in the subjects you wish to take for A Level. In addition students must have a minimum GCSE

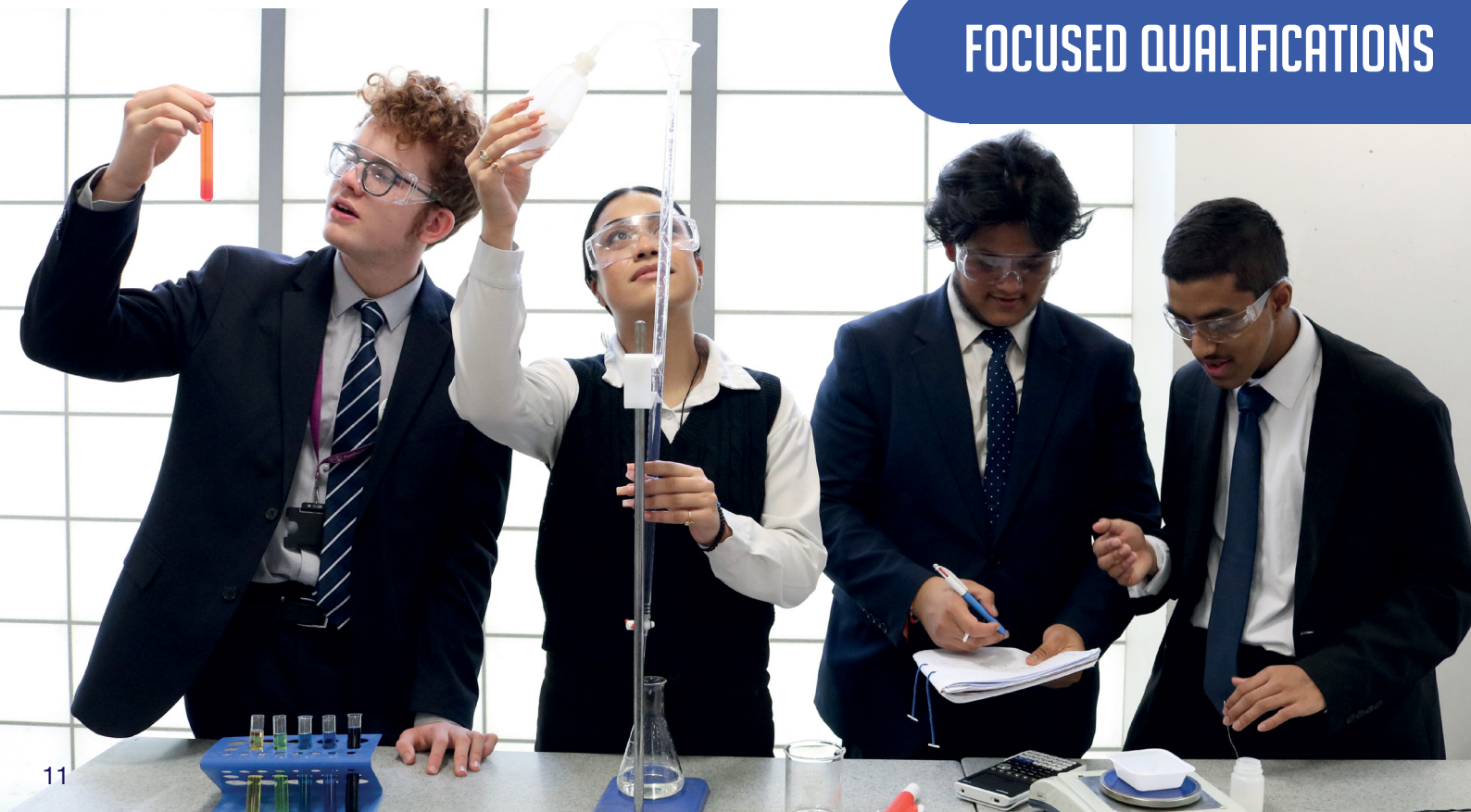
APS of 4.5. To study Maths and Sciences you will need an APS of 5. Most students will study three subjects. Students who have outstanding GCSEs (mostly 8s and 9s) will be guided to study four. Students will complete one of these qualifications to AS standard. All students in Year 13 will then complete three A Levels. The sixth form team will guide you on to the correct courses based on how well you have done at GCSE.

A LEVEL CRITERIA

In subjects not taken at GCSE an associated GCSE will be taken into account. For example: 6 in History, Geography or English Language/Literature for A Level Politics. BTEC grades would only be accepted as one grade within the 5 x 9-4 grades and for Sciences a 6-6 must be obtained in either the Trilogy Science or Triple Science subject.

In Maths and Science subjects, grade 6 applicants must be endorsed by the Head of Department. Students will be expected to undertake preparatory work over the summer for all subjects. Students will complete entrances tests for Maths and Sciences.

FOCUSED QUALIFICATIONS





ART, CRAFT & DESIGN

EXAM BOARD: PEARSON EDEXCEL

CONTENT OF COURSE:

Students can explore a wide variety of media (drawing, painting, etching, printing, digital and textiles) in workshops designed to encourage pupils to experiment and refine their expertise. We aim to arrange visits with professional artists or visits to galleries to give students a broader understanding of the subject.

Component 1(Personal Investigation and Written study):

Students work on their personal project made up of a body of art work and sketchbooks. Pupils will write a thesis which is a contextual academic response to their chosen theme.

Component 2 (Exam question):

Students develop a body of work and sketchbooks that culminates in an exam.

PROGRESSION ROUTES:

The Arts is the 3rd largest industry in the UK and this A Level will give you the opportunity to advance into a creative based career such as graphic design, textile design, illustration, web design, interior design, jewellery design, sculpture or fine art. Our students have gone on to study degrees in Art at top universities and have also studied a wide range of academic subjects at leading universities including Law.

CONTACT: Ms S Hurlstone

ENTRANCE CRITERIA

5x 9-4 including English Lang and Maths at a grade 4. Grade 6 in GCSE Art required.



BIOLOGY

EXAM BOARD: AQA

CONTENT OF COURSE:

Year 1:

- Biological molecules
- Cells
- Organisms exchange substances with their environment
- Genetic information, variation & relationships between organisms

Year 2:

- Energy transfers in and between organisms
- Organisms respond to changes in their internal & external environments
- Genetics, populations, evolution & ecosystems
- The control of gene expression

PROGRESSION ROUTES:

A qualification in Biology will allow progression to university study and entry to careers in a wide range of occupations, including medicine, forensic science, occupational therapy, physiotherapy, radiology, and nursing.

CONTACT: Ms N Pedrosa

ENTRANCE CRITERIA

5x 9-4 including English Lang (grade 4). Grade 6-6 in both Trilogy Sciences or Biology Triple Science subject required. Students must also obtain a grade 5 at Maths and have an APS above 5.0.



BUSINESS

EXAM BOARD: AQA

CONTENT OF COURSE:

Year 1:

- What is business?
- Managers, leadership and decision making
- Decision making to improve marketing performance
- Decision making to improve operational performance
- Decision making to improve financial performance
- Decision making to improve human resource performance

Year 2:

- Analysing the strategic position of a business
- Choosing strategic direction
- Strategic methods: how to pursue strategies
- Managing strategic change

PROGRESSION ROUTES:

A qualification in Business Studies will allow progression to university to study for a Business Studies degree, or combined with another subject, for example a language. Students with a Business Studies qualification have skills that are attractive to potential employers.

CONTACT: Mr J Coulter

ENTRANCE CRITERIA

5x 9-4 including English Lang and Maths (grade 4). Grade 6 in GCSE Business Studies or associated subject e.g. English Lit/Lang, History or Geography if not studied at GCSE.



CHEMISTRY

EXAM BOARD: AQA

CONTENT OF COURSE:

Year 1:

- Nomenclature & isomerism
- Atomic structure & periodicity
- Amount of substance
- Organic chemistry
- Energetics & equilibria
- Bonding & kinetics

Year 2:

- Transition metals & thermodynamics
- Rates & acids & bases
- Electrode potential & electrochemical cells
- Further organic chemistry
- Aromatic chemistry
- Polymers, amino acids, proteins & DNA
- H nmr & chromatography

PROGRESSION ROUTES:

There are a huge range of degree courses available to study either Chemistry itself or combined with other subjects such as: Medicinal Chemistry, Forensic Science and Toxicology or Pharmacology. Certain courses require an A Level in Chemistry. These include courses such as Chemical Engineering, Medicine, Veterinary Medicine, Biological Sciences, Environmental Science, Pharmacy and Dentistry.

CONTACT: Ms S Afzal

ENTRANCE CRITERIA

5x 9-4 including English Lang (grade 4). Grade 6-6 in **both** Trilogy Sciences or Chemistry Triple Science subject required. Students must also obtain a grade 6 in Maths and have an **APS above 5.0**.



COMPUTER SCIENCE

EXAM BOARD: OCR

CONTENT OF COURSE:

Year 1:

- Inputs, outputs, storage function of the processor.
- Databases
- System software, design and development
- Computing related legislation
- Computational thinking
- Algorithms
- IDE features
- Programming techniques
- Data types and structures
- Programming paradigms
- Web technologies

Year 2:

- System development and evaluation
- Moral and ethical issues
- Networks
- Compression and encryption
- Boolean algebra using Karnaugh Maps
- Data representation
- Stages of compilation

PROGRESSION ROUTES:

It is excellent preparation for students looking to take computing studies at degree level, or for anyone considering any kind of career in computing.

CONTACT: Mr R Holden

ENTRANCE CRITERIA

5x 9-4 including English Lang (grade 4). Grade 6 in GCSE Computer Science or Maths (grade 6) required. Students must also have an **APS above 5.0**.



ECONOMICS

EXAM BOARD: AQA

CONTENT OF COURSE:

Year 1:

- The operation of markets and market failure
- The national economy in a global context

Year 2:

- Individuals, firms, markets and market failure
- The national and international economy

PROGRESSION ROUTES:

A qualification in Economics will allow progression to university study for an Economics degree or combine with another subject for example Finance, Accounting, Management, Law and Sociology.

Students with an Economics qualification have skills that are attractive to employers in private businesses, insurance, banking, national and local government, hospital management and economic lawyers.

CONTACT: Mr D Walters

ENTRANCE CRITERIA

5x 9-4 including English Lang (grade 4). Students will also require a grade 6 in Maths.



ENGLISH LITERATURE

EXAM BOARD: PEARSON EDEXCEL

CONTENT OF COURSE:

Year 1:

- Post-2000 Specified Poetry - 'Poetry of the Decade' Anthology
- Prose comparison - 'A Thousand Splendid Suns' and 'Tess of the D'Urbervilles'
- Drama - 'A Streetcar Named Desire'
- Drama - 'Othello'
- Independent Coursework - comparison of two chosen texts

Year 2:

- Study of Shakespeare Critical Anthology
- Poetry - Christina Rossetti
- Completion of Independent Coursework
- Revision
- **Component 1:** Drama (30% exam)
- **Component 2:** Prose (20% exam)
- **Component 3:** Poetry (30% exam)
- **Component 4:** Coursework (20%)

PROGRESSION ROUTES:

English A Level is unique as it will support entry to the widest range of university courses ranging from Law through to History, Sociology or Psychology, when compared to any other single A Level.

CONTACT: Ms S Choudhury

ENTRANCE CRITERIA

5x 9-4 including Maths (grade 4).
Grade 6 in **both** GCSE English Literature and Language required.



GEOGRAPHY

EXAM BOARD: OCR

CONTENT OF COURSE:

Year 1:

- Glaciation
- Changing Spaces: Making Places
- Earth's Life Support Systems
- Power & Borders
- Trade in a Contemporary World
- Non-Examined Assessment
- Fieldwork

Year 2:

- Non-Examined Assessment
- Future of Food
- Climate Change

PROGRESSION ROUTES:

Geography A Level provides an excellent foundation for further study at university, either through a Geography degree or as a supporting subject for other degrees. Qualifications in Geography are highly sought after in a wide range of occupations, including journalism, law, and business. It is the skills learnt studying Geography that make geographers eminently employable in the wider world. FHS Geography A Level students have gone on to study subjects such as Economics, Business and Geography at university.

CONTACT: Mr A Hughes

ENTRANCE CRITERIA

5x 9-4 including English Lang and Maths (grade 4). Grade 6 in GCSE Geography required or in an associated subject e.g. English Lit/ Lang or History if not studied at GCSE.



HISTORY

EXAM BOARD: PEARSON EDEXCEL

CONTENT OF COURSE:

Year 1:

- Germany and West Germany 1918 - 89 (30% exam)
- Rebellion and Disorder under the Tudors 1485 - 1603 (30% exam)

Year 2:

- The rise and fall of fascism in Italy 1911 - 46 (20% exam)
- The Causes of the Russian Revolution 1917 (20% coursework)

A Level students will study four units, which will include several country's history, covering a 200 year period.

PROGRESSION ROUTES:

A good grade at A Level History is recognised by all universities as a facilitating subject for entry into a wide range of undergraduate disciplines and courses. The skills of analysis are invaluable in many jobs, and the ability to analyse and then prioritise information is vital to decision making. Studying A Level History also provides graduates the opportunity to enter into a wider range of occupations, including within law, journalism or education.

CONTACT: Mr A McGhee

ENTRANCE CRITERIA

5x 9-4 including English Lang and Maths (grade 4). Grade 6 in GCSE History required or in an associated subject e.g. English Lit/Lang or Geography if not studied at GCSE.



LANGUAGES

SPANISH & FRENCH

EXAM BOARD: AQA

CONTENT OF COURSE:

Year 1:

- Current Trends - Changing Families/ Cyber Society/New Partnerships
- Artistic Culture - Heritage/ Music/ Culture
- Cultural topic: A film

Year 2:

- Social Issues - Diversity/ Marginalisation/Criminality
- Political Life - Teenage politics/ Demonstrations/ Immigration
- Cultural topic - A Novel

PROGRESSION ROUTES:

Most universities will offer the opportunity to study a combined degree such as Business & Languages with the opportunity to study abroad. Languages will open the doors to various industries such as travel & tourism, customer relations, law, international relations, international business and some governmental agencies.

CONTACT: Ms M El Mrabet

ENTRANCE CRITERIA

5x 9-4 including English Lang and Maths (grade 4). Grade 6 in chosen language studied at GCSE required.



MATHEMATICS

EXAM BOARD: PEARSON EDEXCEL

CONTENT OF COURSE:

Pure Maths Units:

Algebra and Functions, Coordinate geometry in the (x, y) plane, Further Algebra, Trigonometry, Vectors, Differentiation, Integration, Exponentials and Logarithms, Proof, Algebraic and Partial Fractions, Functions and Modelling, Sequences and Series, Parametric Equations and Numerical Methods.

Applied Maths Mechanical Units:

Modelling in Mechanics, Constant Acceleration, Forces and Motion Variable Acceleration, Moments, Forces and Friction, Projectiles, Applications of Forces, Further Kinematics

Applied Maths Statistical Units:

Data Location, Measures of Location and Spread, Representations of Data, Correlation, Probability, Mutually Exclusive and independent Events, Statistical Distributions, Hypothesis Testing, Regression, Correlation, Conditional Probability, The Normal Distribution.

PROGRESSION ROUTES:

Maths provides a pathway to a variety of areas including economics, medicine, psychology, architecture, teaching, engineering, environmental studies, and accountancy.

FURTHER MATHS: Students will be required to have an 8 or 9 in GCSE Maths and be studying A Level Maths.

CONTACT: Mr M Semar

ENTRANCE CRITERIA

5x 9-4 including English Lang (grade 4). Grade 6 in GCSE Maths and an APS above 5.0 required.



PHYSICS

EXAM BOARD: AQA

CONTENT OF COURSE:

Year 1:

- Measurement & errors
- Particles & radiation
- Waves
- Mechanics & Materials
- Electricity

Year 2:

- Further mechanics & Thermal Physics
- Capacitors
- Electric and Magnetic Fields
- Nuclear physics
- Turning points in Physics

PROGRESSION ROUTES:

As well as pure and applied Physics itself, Physics is an essential qualification to work in different engineering disciplines. It provides additional understanding for Chemistry and offers great opportunities to better understand the applications of Maths. It is a qualification highly respected by employers and universities as one that is really able to showcase the intelligence, analytical skills and problem solving skills of those who take it. Physics has great application in financial analysis, law and video game design.

CONTACT: Mr O Awosile

ENTRANCE CRITERIA

5x 9-4 including English Lang (grade 4). Grade 6-6 in both Trilogy Sciences or Physics Triple Science subject required. Students must also obtain a grade 7 in Maths, or be studying A Level Maths, and have an APS above 5.0.



POLITICS

EXAM BOARD: PEARSON EDEXCEL

CONTENT OF COURSE:

Year 1:

- UK Politics
- UK Government

Year 2:

- Core Political Ideas
- Government & Politics of the USA

A Level Politics will help develop your analytical and critical thinking whilst also developing your research and presenting skills. Politics will develop your extended writing skills and will provide an excellent foundation for any chosen subject at degree level. The subject makes an excellent combination with subjects such as History, Sociology, Economics and English.

PROGRESSION ROUTES:

A qualification in Politics is widely recognised as a pathway to studying for a university degree. It also provides the opportunity to enter a wide range of occupations, including local and national government, law, journalism and the Civil Service.

CONTACT: Ms B Williams

ENTRANCE CRITERIA

5x 9-4 including English Lang and Maths (grade 4). Grade 6 in associated subject required e.g. English Lit/Lang, History or Geography.



PSYCHOLOGY

EXAM BOARD: AQA

CONTENT OF COURSE:

Year 1:

- Approaches
- Biopsychology
- Psychopathology
- Social Influence
- Research Methods
- Issues and Debates

Year 2:

- Research Methods
- Relationships
- Forensic Psychology
- Schizophrenia

PROGRESSION ROUTES:

Psychology is a well regarded subject which is accepted by universities for students studying both Science (including Medicine) and Arts courses. There are a range of psychology specific careers such as: clinical and educational counselling, forensic and sport psychology and applied psychology. Psychology also equips you with skills and knowledge applicable in a range of professional sectors such as careers in biomedicine, criminology, the media, business management, the Civil Service, finance, law and business.

CONTACT: Ms B Williams

ENTRANCE CRITERIA

5x 9-4 including English Lang and Maths (grade 4). Grade 6 in associated subject required e.g. English Lit/Lang, History or Geography.



SOCIOLOGY

EXAM BOARD: AQA

CONTENT OF COURSE:

Year 1:

- Families and Households
- Education
- Research Methods

Year 2:

- Beliefs in Society
- Crime and Deviance
- Theory

PROGRESSION ROUTES:

Sociology is a subject that is widely recognised and highly respected by universities, especially for entry onto courses such as English, History, Psychology, Law, Politics and Medicine (with the appropriate sciences). The subject is also respected by employers in a wide range of careers which involve dealing with the general public such as teaching, police, social work and youth work. Sociology is particularly relevant for those working in market research and social science research. Moreover, it can lead to careers in advertising, journalism, business and law.

CONTACT: Ms B Williams

ENTRANCE CRITERIA

5x 9-4 including English Lang and Maths (grade 4). Grade 6 in associated subject required e.g. English Lit/Lang, History or Geography.

T LEVELS



NEW FOR 2024

WHAT ARE T LEVELS?

T Levels are new qualifications introduced by the government and designed in partnership with employers. The aim is to make sure young people are learning in a way that prepares them for the workplace.

T Levels mix classroom instruction with crucial “on-the-job” experience. In the two-year health programme, you will learn about working in the healthcare industry, effective clinical and scientific practice, infection prevention and control in healthcare settings, as well as gaining important practical and technical skills for the industry.

This T Level healthcare course, which is equivalent to three A Levels, will help you improve your employment prospects by giving you the opportunity to obtain substantial work experience in a real-world setting. You could advance into a variety of positions, such as a healthcare support worker in a healthcare setting, apprenticeships, or higher education by achieving this industry-recognized certificate.



HEALTHCARE SCIENCE

CONTENT OF COURSE:

Do you want to work in the health industry for a living? Our T Level Health Level 3 course will give you the fundamental knowledge and abilities needed to help jump-start your path to the future if you're hoping to gain a qualification that will help you advance towards higher education and jobs in this profession.

In this course, you will learn about:

- The clinical assessments undertaken by nurses
- Techniques needed by nurses when working with patients
- How to create care plans
- How to support patients to stay healthy

Health T-level students will spend time being trained at school in our on-site provision. These facilities ensure students are well-prepared for the working world. The T-level also includes 45 days (315 hours) of compulsory placement in healthcare settings.

INDUSTRY PLACEMENTS:

Industry placement is a mandatory part of the T Level qualification

You are expected to gain substantial technical skill training

You will spend a minimum of 315 hours in the workplace with an external employer

The placement will be specific and in line with your occupational specialism

Students will not be able to complete the certificate unless they complete 45 days of mandatory work experience.

A single placement of 315 hours can be split across two employers. This might be a day release (1 day a week) or a block of 9 weeks. This will be determined by the school.

CAREER PATHWAYS:

Upon completion of the T Level Health qualification, career progression routes include:

- Paramedic
- Adult Nurse
- Paediatric Nurse
- Midwifery
- Mental Health Nurse
- Mental Health Practitioner
- Leadership roles in Health
- Healthcare Support Worker in Health Settings
- Ambulance Care Assistant
- Emergency Care Assistant
- Allied Health Professionals

CONTACT: Mr J Andrews

**THERE ARE 45 DAYS OF
COMPULSORY WORK EXPERIENCE
THAT WILL INVOLVE STUDENTS
TRAVELLING FURTHER AFIELD -
POSSIBLY OUTSIDE THE BOROUGH
TO ACCESS THE MOST APPROPRIATE
PLACEMENT**

T LEVEL ENTRANCE CRITERIA

5x 9-4 grades required including a grade 4 in English Language, Maths and Trilogy Science (4-4)

BTEC LEVEL 3



WORK RELATED QUALIFICATIONS

WHAT ARE BTECS?

BTECs are qualifications that provide a practical, real-world approach to learning and skill development alongside a key theoretical background. BTECs continue to be developed and updated for industry requirements and in response to the needs of learners. This ensures that learners gain maximum benefit from their work whilst qualifying. This could be in readiness for the workplace or continued study at degree level, whether in an academic environment or a more specialist vocational area.

We offer the BTEC Extended Certificate (equivalent to one A Level) and Diploma (equivalent to two A Levels). They offer natural progression to university or the world of work.

LEVEL 3 BTEC CRITERIA

In order to access Level 3 courses students will need to attain a minimum of 5 GCSEs at grade 3-9 (grade 4s in English Language and Maths). This can include BTEC courses previously followed. Please check individual subjects for entrance criteria.

All courses require students to pass external examination/assessment units. This will be a minimum pass mark of 40%. Failure to pass external exams will mean that students do not pass the course.



APPLIED SCIENCE

Level 3 Diploma & Extended Certificate

This course is ideal if you already enjoy science and are interested in developing a career in a science related profession. The course will cover the use of science and scientific skills, within a variety of vocational settings, as well as the study and research of a wide range of units. On completion of the course students will have a grounded knowledge of science in the three disciplines of Biology, Chemistry and Physics.

CAREER PATHWAYS:

Forensic science, occupational therapy, physiotherapy, radiology, nursing, science technician, quality control technician/analyst or research assistant and laboratory research assistant.

CONTACT: Ms T Jeyachandran

LEVEL 3 ENTRANCE CRITERIA

5x 9-3 including a grade 4 in both English Lang and Maths plus a 3-3 in Trilogy Science required. Level 2 BTECs accepted at Pass level.



BUSINESS

Level 3 Diploma

This course consists of six mandatory units and two optional ones: Exploring Business; Developing a Marketing Campaign (external exam); Personal and Business Finance (external exam); Managing an Event; International Business; Principles of Management plus two optional units.

Level 3 Extended Certificate

This course will include exploring the business purposes, introduction to marketing, business communication and introduction to accounting. The course covers the key knowledge and practical skills required in a range of business industries.

CAREER PATHWAYS:

Advertising executive, human resources manager, public relations executive, recruitment consultant, retail manager, sales executive, building society manager, company secretary and distribution/logistics manager.

CONTACT: Mr J Coulter

LEVEL 3 ENTRANCE CRITERIA

5x 9-3 required including a grade 4 in English Lang and Maths. Level 2 BTECs accepted at Pass level.



SPORT

Level 3 Diploma & Extended Certificate

The Diploma consists of nine units (three external units and six mandatory units which include two optional units) covering a wide range of topics including Sports Leadership and Sport Psychology.

The Extended Certificate consists of four units of which three are mandatory and two are external based on Functional Anatomy and Physiology. Mandatory content (83%). External assessment (67%).

A broad base of study for the sport sector, this qualification is designed to support progression to higher education when taken as part of a programme of study that includes other appropriate BTEC Nationals or A Levels.

CAREER PATHWAYS:

Employment opportunities include health & fitness instructor, coaching assistant, PE teacher, coach, gym instructor and sports scientist.

CONTACT: Ms A McKeever

LEVEL 3 ENTRANCE CRITERIA

5x 9-3 required including a grade 4 in English Lang. Maths and 3-3 in Trilogy Science. Level 2 BTECs accepted at Pass level.



APPLICATION TO STUDY

STAGE 1

Choose Featherstone Sixth Form and refer to the admissions criteria.

STAGE 2

Please read through this prospectus carefully so that you can make an informed decision. If you are unsure about anything, get some advice. In the first instance, speak to your form tutor, a member of the Sixth Form team or ring the school.

STAGE 3

Take a look at the Course Pathways. It will help you to make your choices at the right level.

STAGE 4

All students will need to apply online through the Featherstone High website.

Offer letters will be sent out after the receipt of a satisfactory reference.

STAGE 5

Final enrolment will happen during August 2024. Enrolment takes place on GCSE results day for internal students. All external students will enrol the day after GCSE results day. If you are offered a place, attendance at the induction day is mandatory. A place on a course is only guaranteed if you enrol and meet the subject criteria.



CHOOSE FH6 FOR YOUR FUTURE

WWW.FEATHERSTONEHIGH.EALING.SCH.UK



Montague Way Southall, UB2 5HF

020 8571 8581

info@featherstonehigh.ealing.sch.uk