

GCSE Physical Education Learning Journey

How am I assessed?



Paper 1
1hr 45 minute exam
90 marks

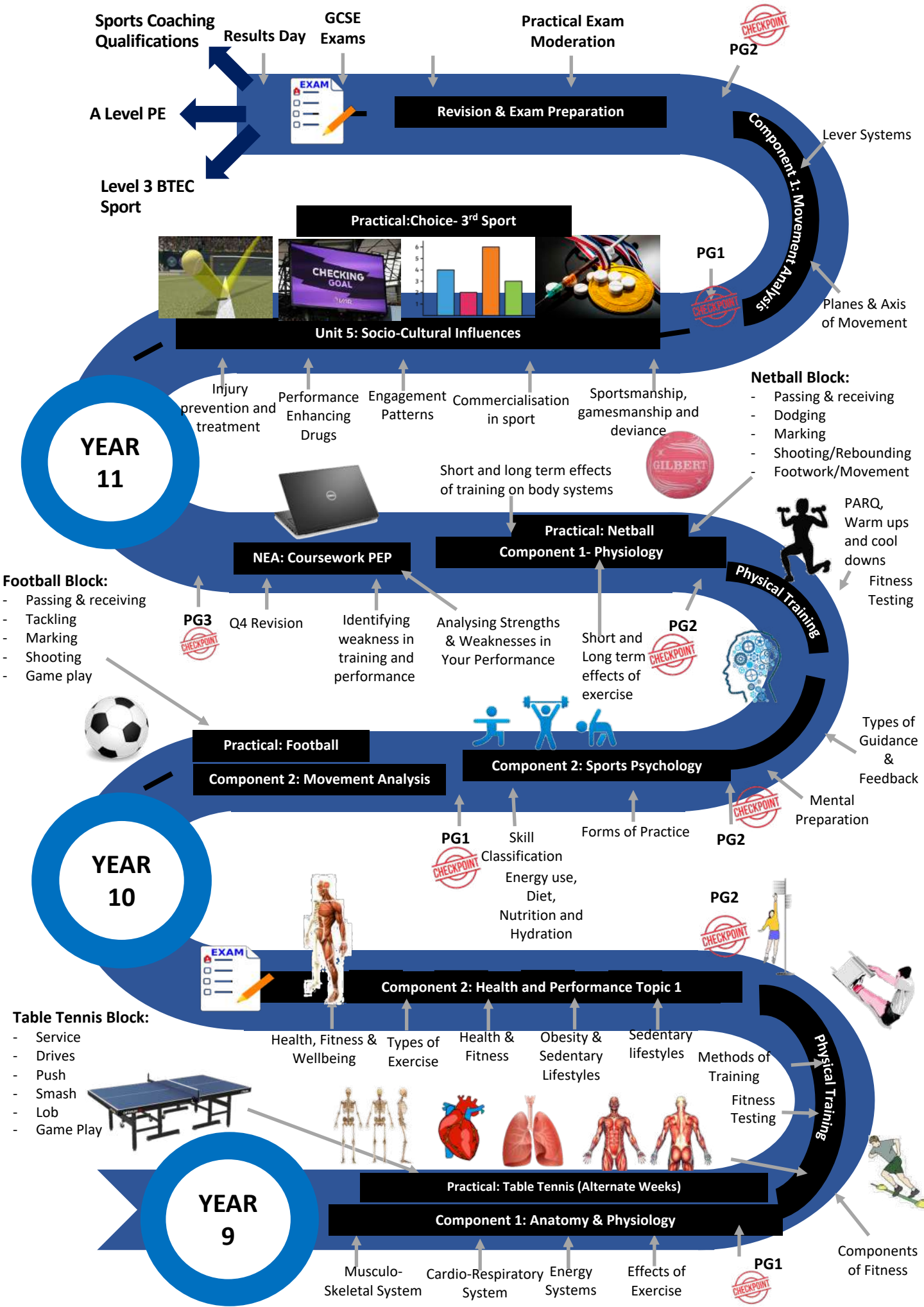
- Topic 1: Anatomy & Physiology
- Topic 2: Movement Analysis
- Topic 3: Physical Training
- Topic 4: Use of Data

Paper 2
75 minute exam
70 marks

- Topic 1: Health, Fitness and Wellbeing
- Topic 2: Sports Psychology
- Topic 3: Socio-cultural Influences
- Topic 4: Use of Data

Non-Examined Assessment (NEA)
125 marks

- Coursework PEP (20 Marks)
- Practical Performance in 3 sports:
 - 1 x individual sport (35 marks)
 - 1 x team sport (35 marks)
 - 1 x free choice (not one of the previous sports assessed in) (35 marks)



GCSE Physical Education Learning Journey

How am I assessed?



Paper 1
1hr 45 minute exam
90 marks

- Topic 1: Anatomy & Physiology
- Topic 2: Movement Analysis
- Topic 3: Physical Training
- Topic 4: Use of Data

Paper 2
75 minute exam
70 marks

- Topic 1: Health, Fitness and Wellbeing
- Topic 2: Sports Psychology
- Topic 3: Socio-cultural Influences
- Topic 4: Use of Data

Non-Examined Assessment (NEA)
125 marks

- Coursework PEP (20 Marks)
- Practical Performance in 3 sports:
 - 1 x individual sport (35 marks)
 - 1 x team sport (35 marks)
 - 1 x free choice (not one of the previous sports assessed in) (35 marks)

