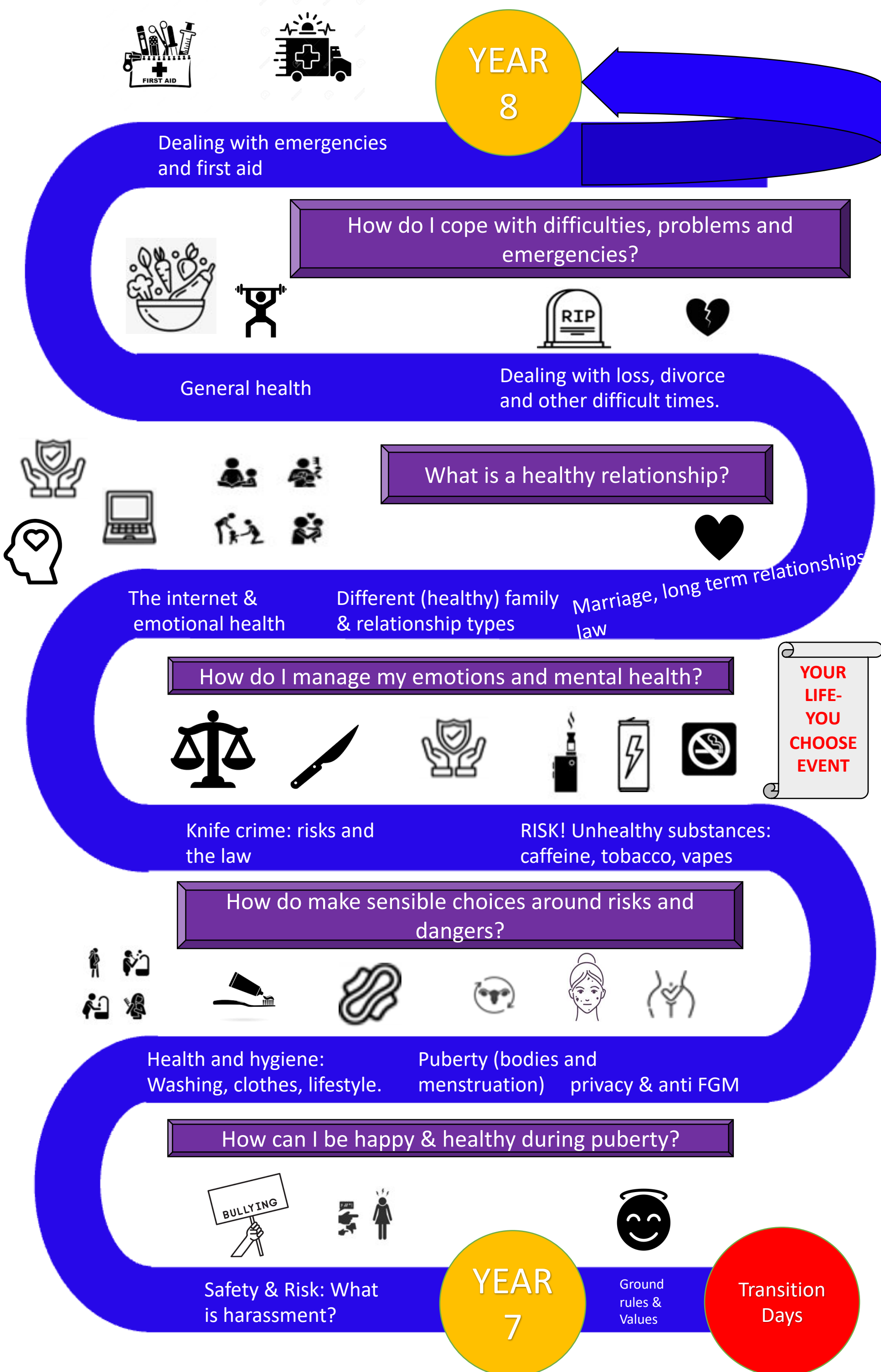


LEARNING JOURNEY



In secondary schools, **all students of all abilities must (by law) have learned about these topics by the end of Y11**. These are covered in PSHE and science, RE and other subjects. We cover an element of each every year, revisiting and getting more challenging to be age-appropriate.

- How to be safe and assess risk
- How your body changes at key life stages
- Health including physical & mental health, prevention of illness, first aid and substance abuse risks
- Families, fertility and contraception
- Healthy relationships of all types, including friendship, family and intimate. Consent & the law.
- Online safety and understanding the media
- Mental wellbeing including in challenging times and situations